

Configuration File Installation Instructions

Thomson SpeedTouch/Gateway

If you need assistance please contact ipStore Support at 281-579-0400.

NOTE: Ignore the “isp.def” references if you are not utilizing the default configuration feature.

1. Locate and make a copy of the **user.ini** file you use for this model (**Ctrl+c** then **Ctrl+v**) and rename the **Copy of user.ini** file to **isp.def**. (The **user.ini** can be obtained from the modem by following the steps outlined in the **Saving Configuration File Instructions** document.)

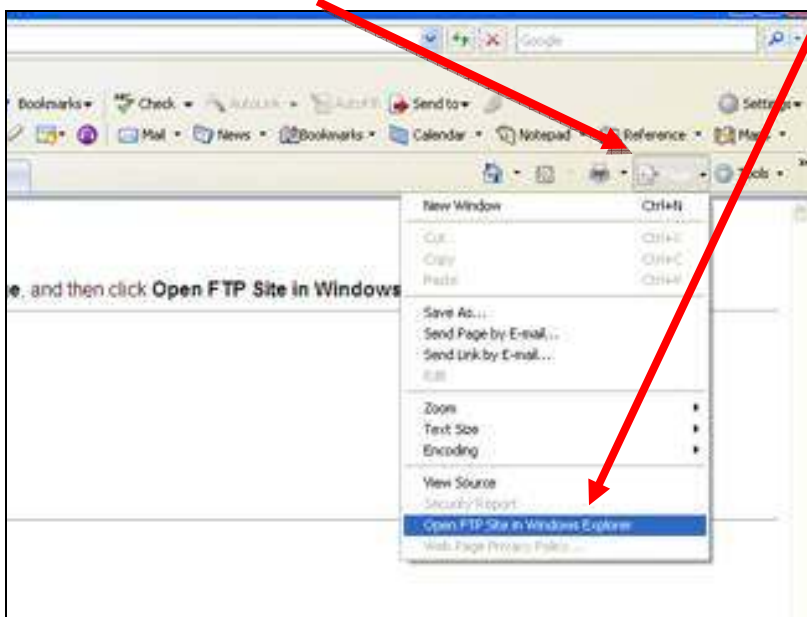
http://ipstore.us/documentation/internet_instructions_sheets/Saving%20Configuration%20File%20Instructions.pdf

NOTE: Configuration files are not interchangeable between different models. Using the wrong file can cause the modem to not work properly.

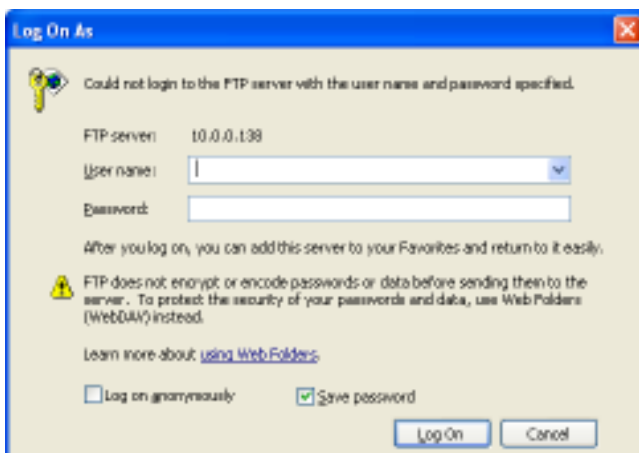
2. Copy both the **user.ini** & **isp.def** files to the clipboard (**Ctrl+c**).
3. Open web browser and type **ftp://10.0.0.138/dl** in the URL line.
4. If prompted to login through Internet Explorer, press **Cancel**. (You will login through Windows Explorer in step 6.)

NOTE: You can only login to the modem through one application.

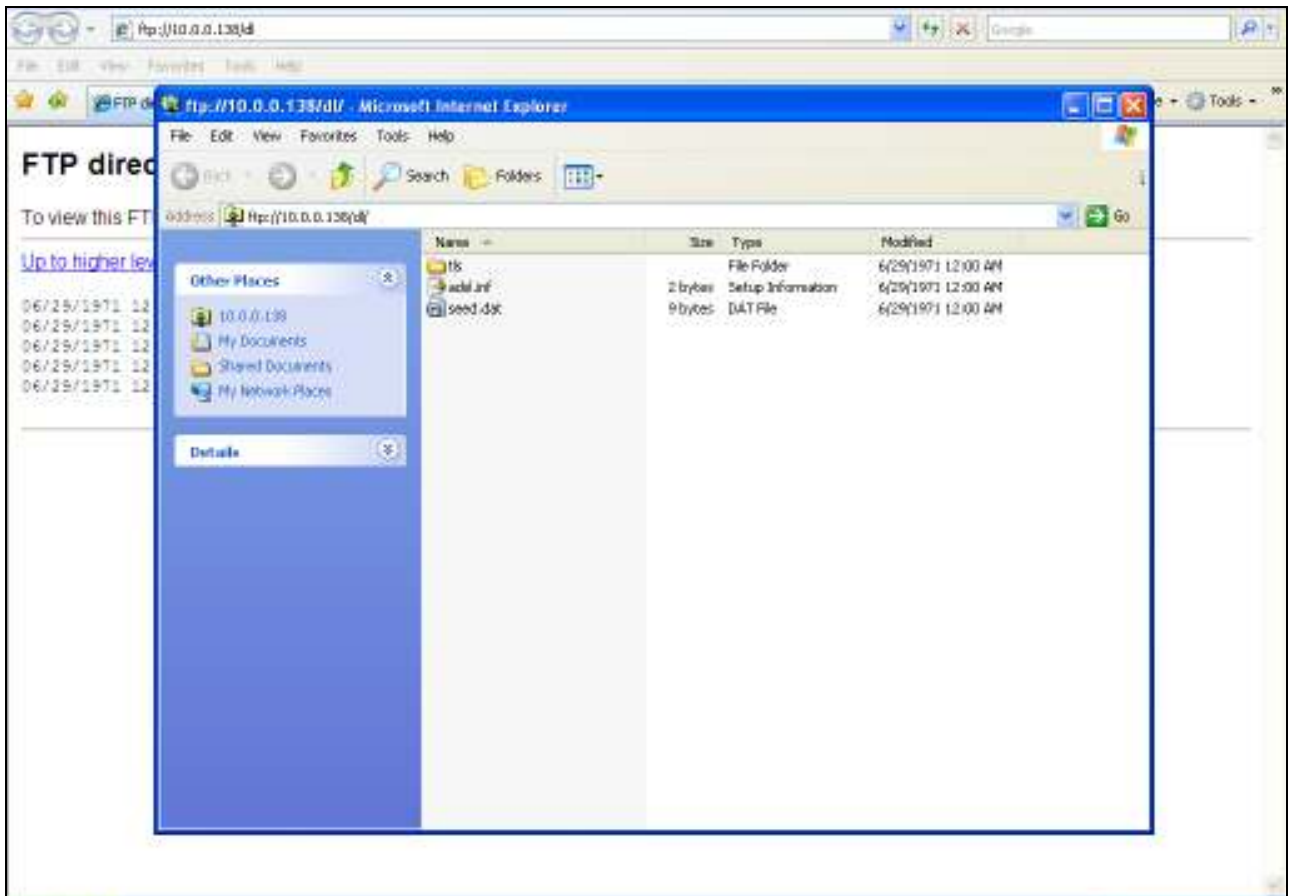
5. For IE7+, click on the **Page** dropdown menu and select **Open ftp Site in Windows Explorer**.



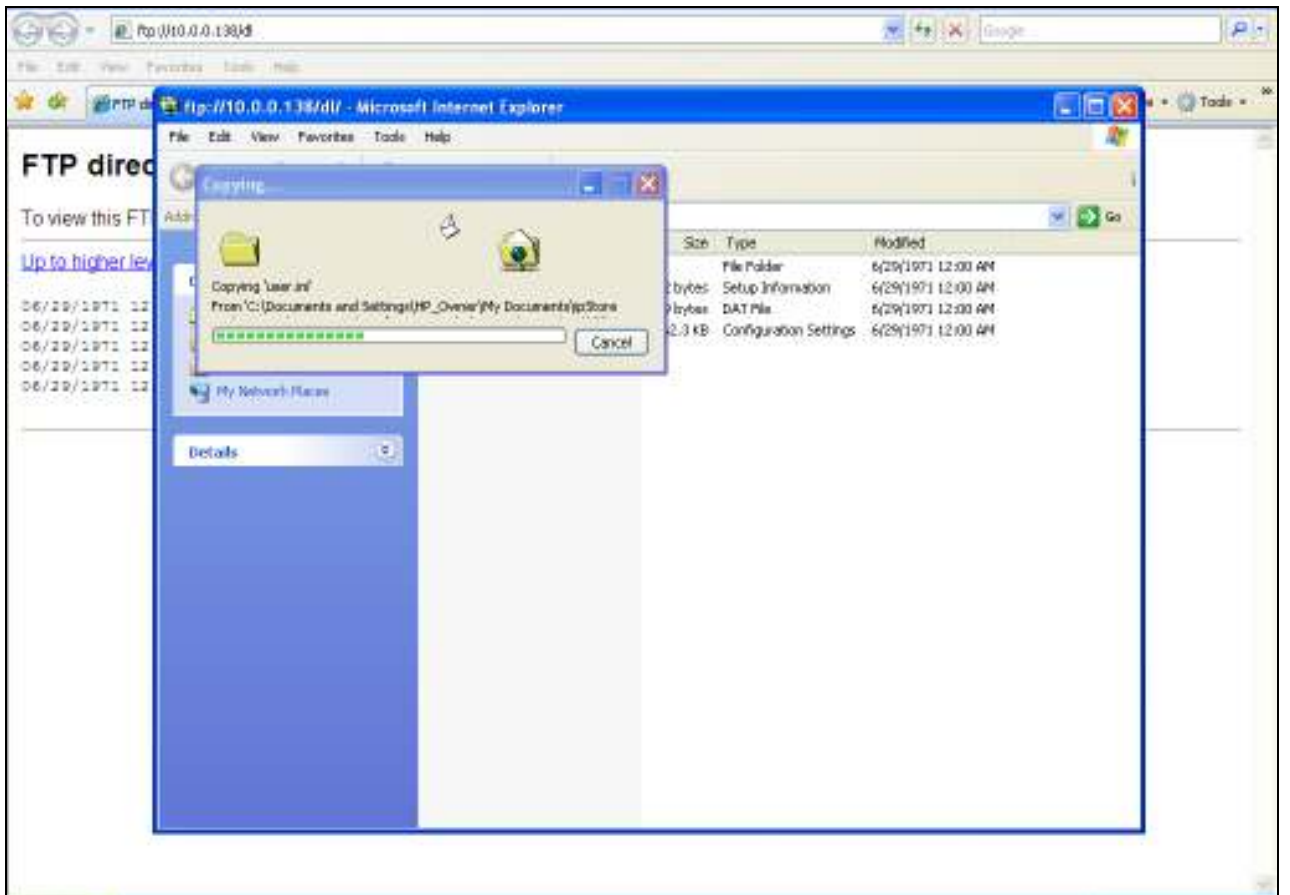
6. If prompted, enter your username and password and click on **Log on**.



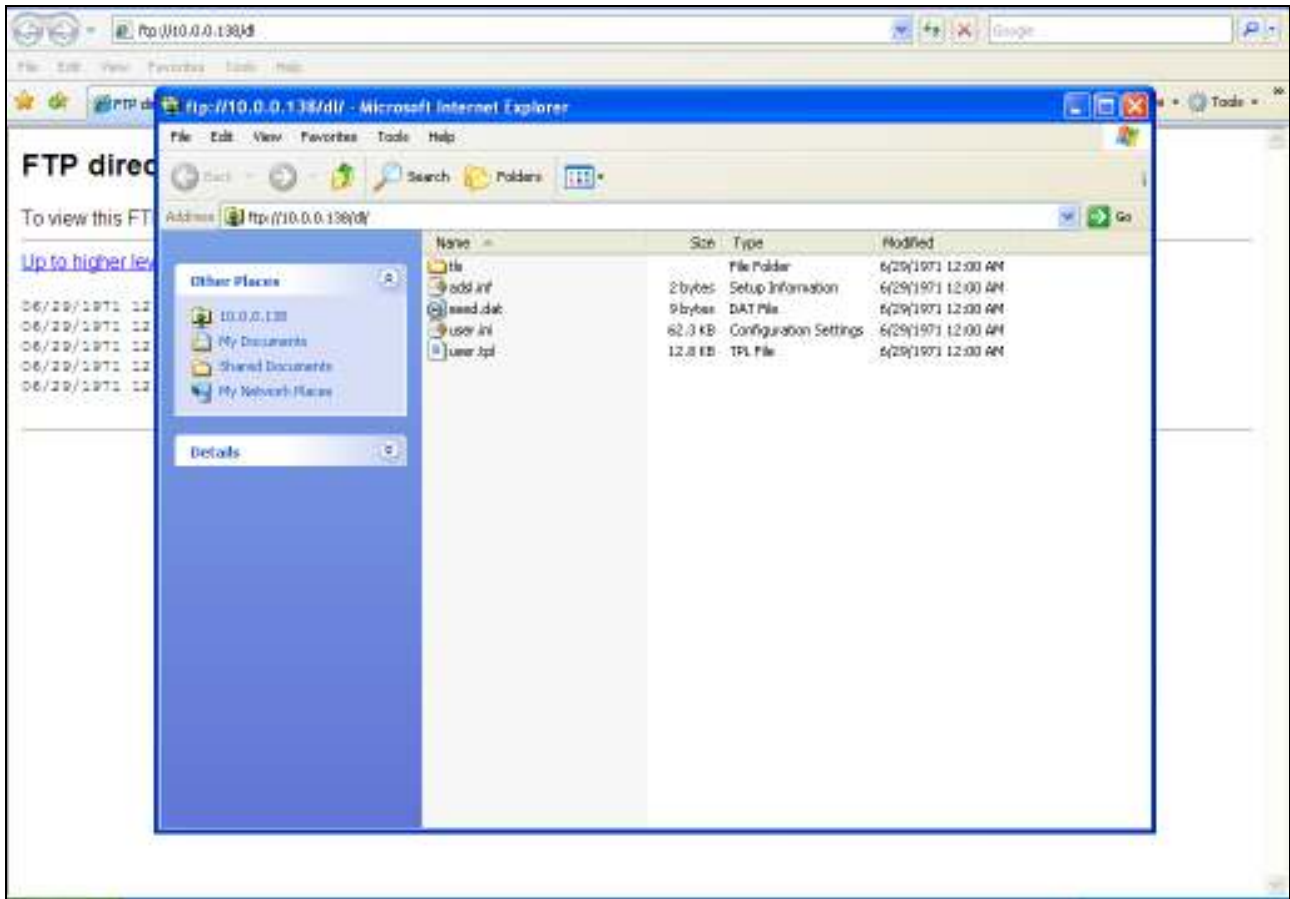
7. Press **F5** to refresh and confirm connection. You should see something similar to this.



8. Paste files (**Ctrl+v**).



- When copy is complete press **F5** to refresh and confirm. Screen should blink and files should sort alphabetically, if not, press **F5** again.



- Close web browser.
- Power cycle modem or press the reset button.