

# Configuration Template Installation Instructions

## Thomson SpeedTouch/Gateway

If you need assistance please contact ipStore Support at 281-579-0400.

Template files (.tpl) are used for additional configuration options that are not available from the SpeedTouch Set-up Wizard and are intended to be used for the development of your custom default configuration. Templates are available from these sources; a) the SpeedTouch Set-up CD that came with the modem, b) on our website support page, [www.ipstore.us](http://www.ipstore.us), or c) provided by ipStore Support via email.

Any template files installed will be deleted if the modem is reset or if firmware is reinstalled.

### Template Installation

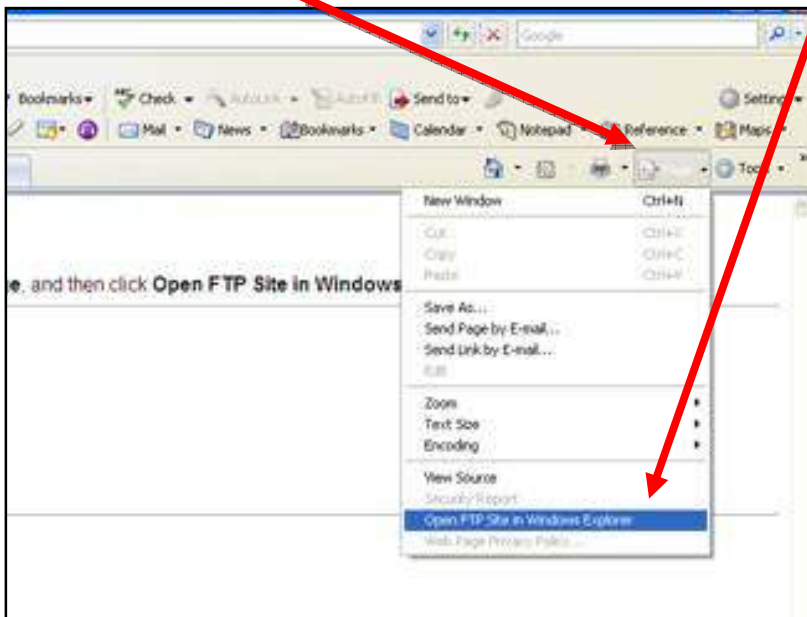
1. Obtain the template file from above source and store it to your local hard drive.
2. Locate template file and make a copy (**Ctrl+c**).

**NOTE: Template files are not interchangeable between different models. Using the wrong template can cause the modem to not work properly.**

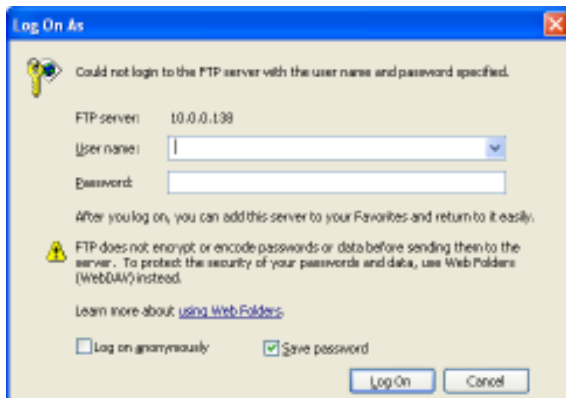
2. Open web browser and type ftp://10.0.0.138/dl in the URL line.
3. If prompted to login through Internet Explorer, press **Cancel**. (You will login through Windows Explorer in step 6.)

**NOTE: You can only login to the modem through one application.**

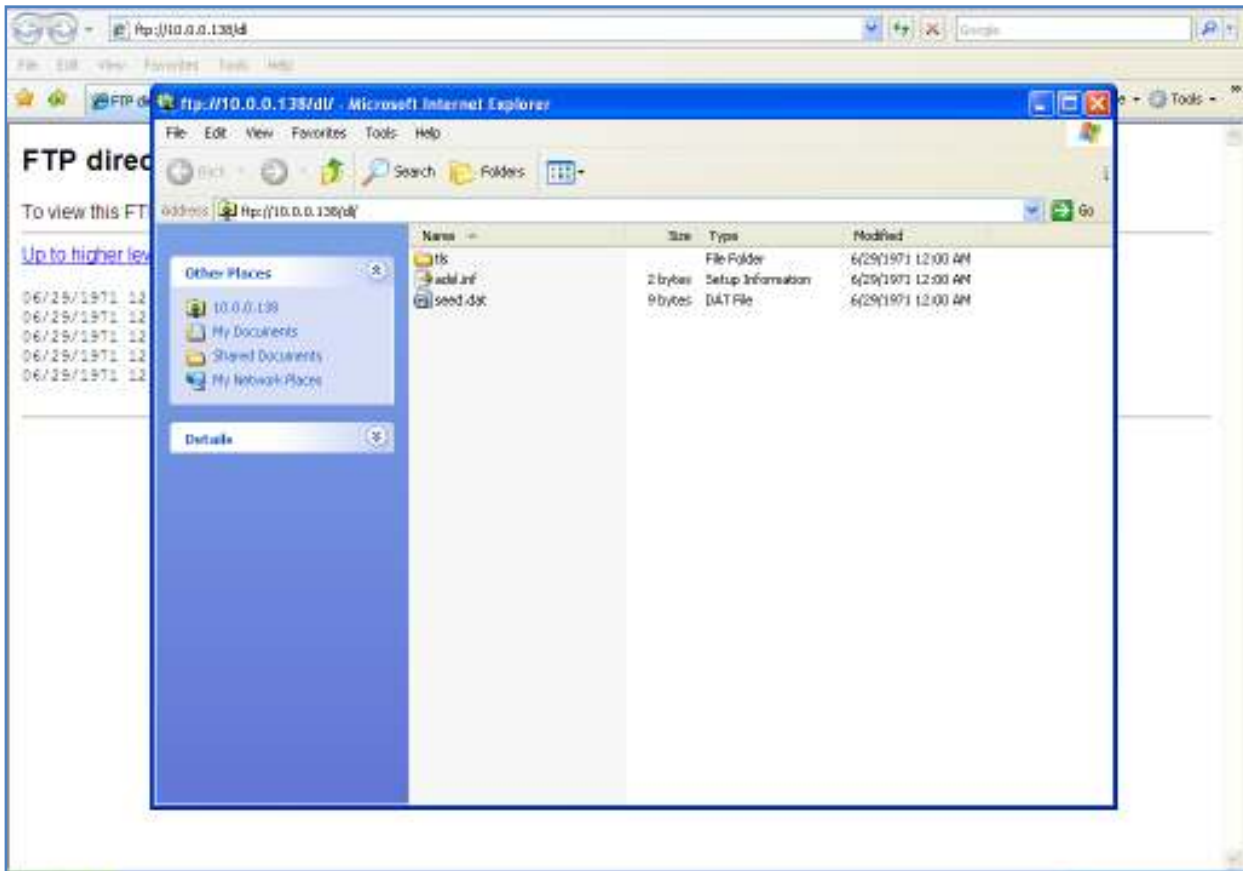
4. For IE7+, click on the **Page** dropdown menu and select **Open ftp Site in Windows Explorer**.



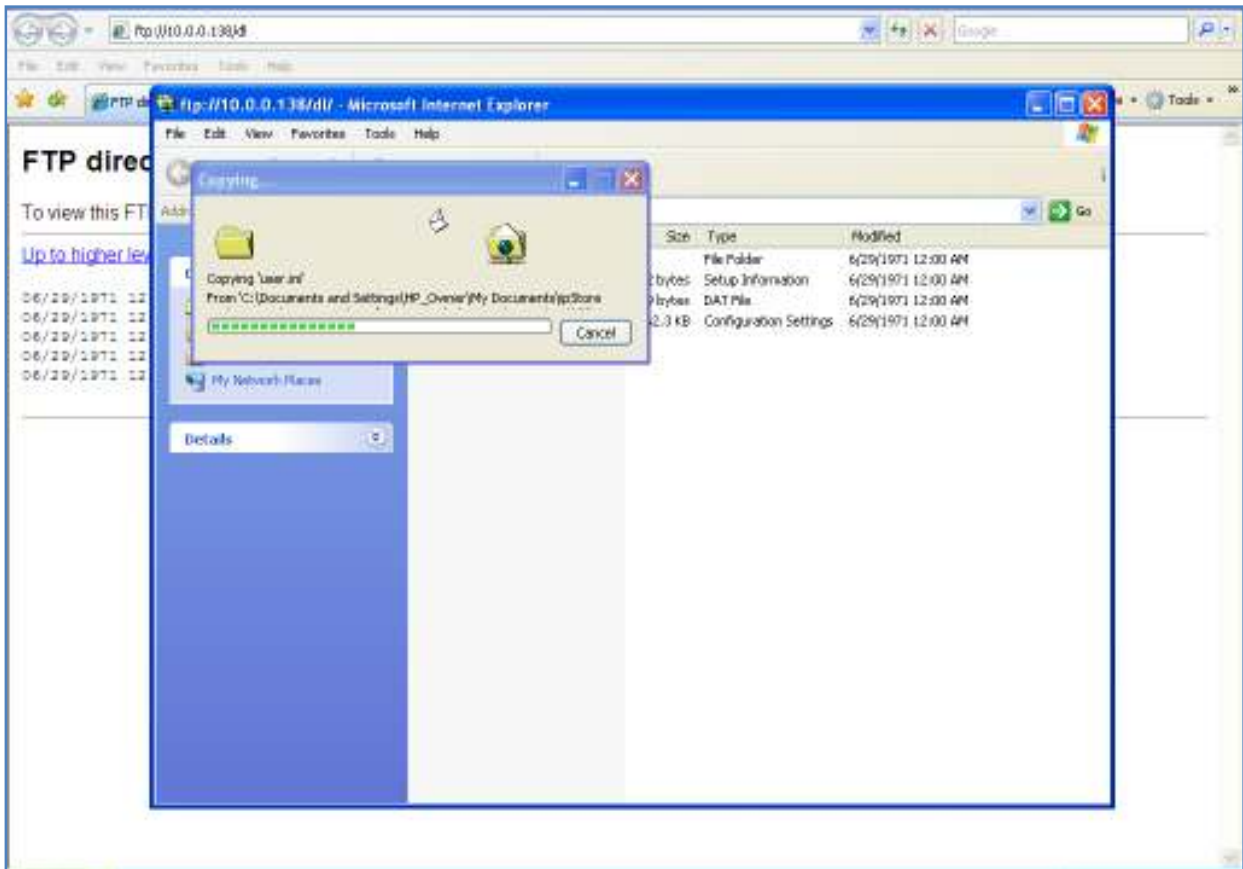
5. If prompted, enter your username and password and click on **Log on**.



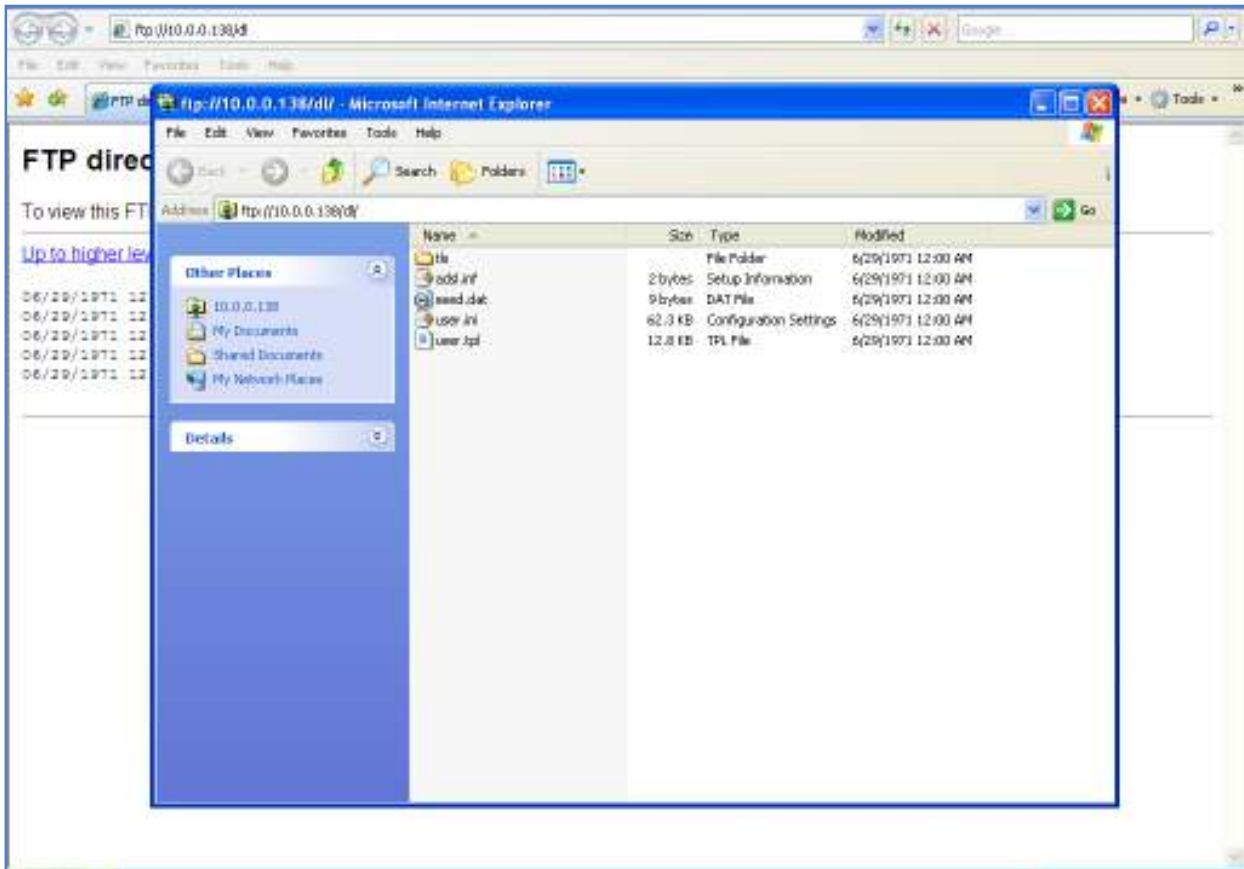
6. Press **F5** to refresh and confirm connection. You should see something similar to this.



7. Paste files (**Ctrl+v**).

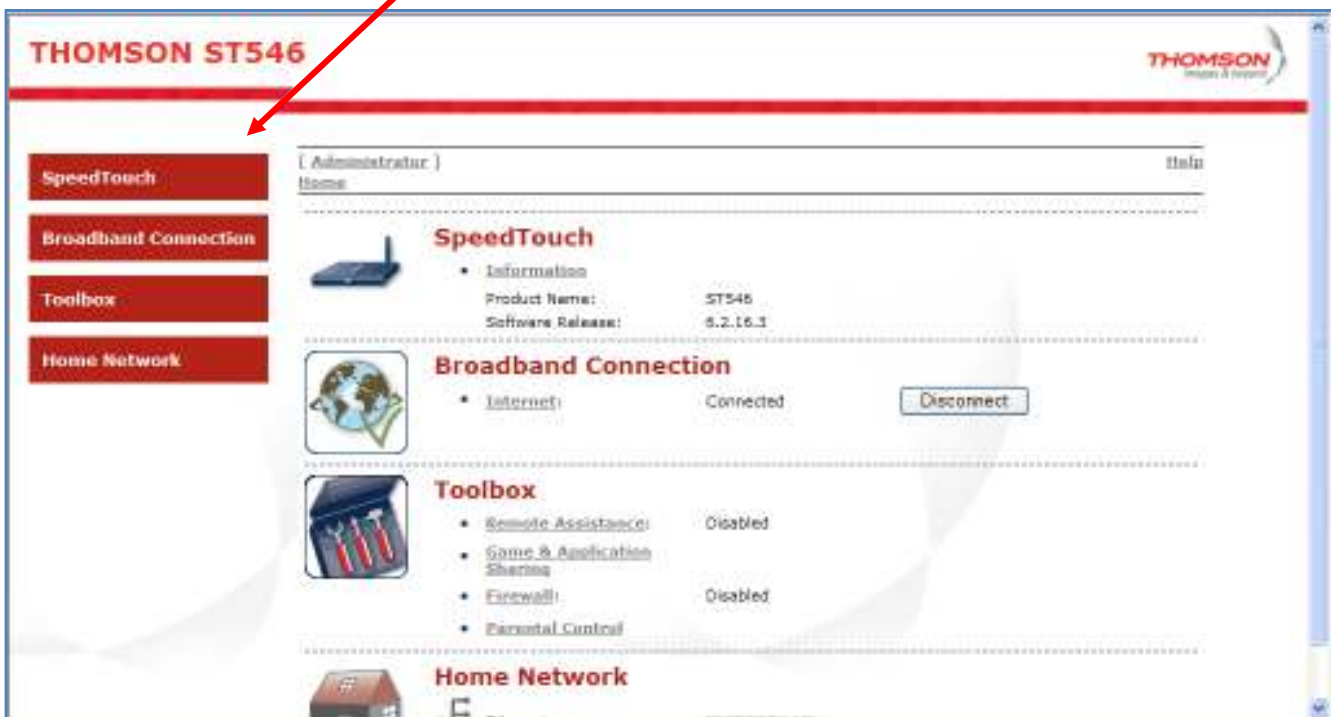


- When copy is complete press **F5** to refresh and confirm. Screen should blink and files should sort alphabetically, if not, press **F5** again.



### Using Template

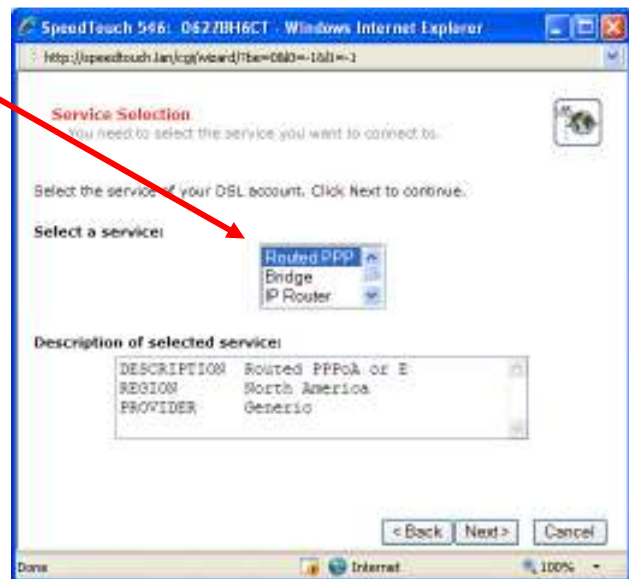
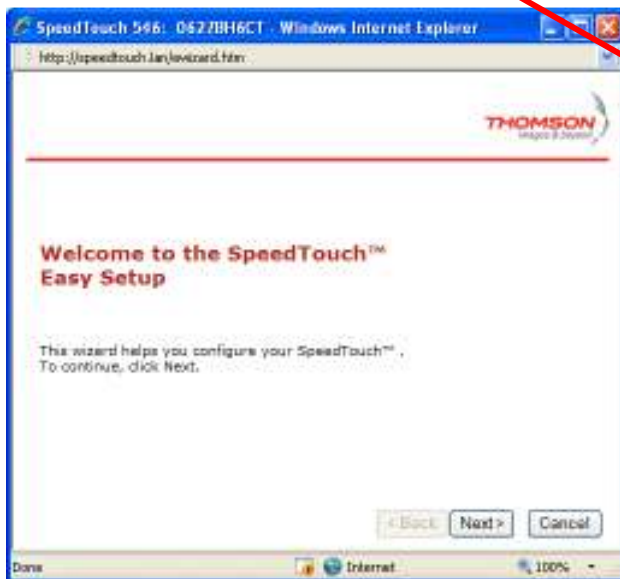
- Access modem GUI by entering **http://10.0.0.138** in the web browser.
- From the main page select **Speedtouch** from the left menu.



3. Scroll down to **Pick a Task** and select **Set Up**.



4. Template will be available in the **Select a Service** window. Select the template and click on **Next**.



5. Continue setting up the modem using the template selected.
6. If you are planning on using the configuration from this template as your custom default configuration feature, you will need to follow the **Saving Backup Configuration File** instructions and the steps outlined in the **Configuration File Installation Instructions** document.

#### **Saving Backup Configuration File**

[http://ipstore.us/documentation/internet\\_instructions\\_sheets/Saving%20Configuration%20File%20Instructions.pdf](http://ipstore.us/documentation/internet_instructions_sheets/Saving%20Configuration%20File%20Instructions.pdf)

#### **Configuration File Installation Instructions**

[http://ipstore.us/documentation/internet\\_instructions\\_sheets/Configuration%20File%20Installation%20Instructions.pdf](http://ipstore.us/documentation/internet_instructions_sheets/Configuration%20File%20Installation%20Instructions.pdf)